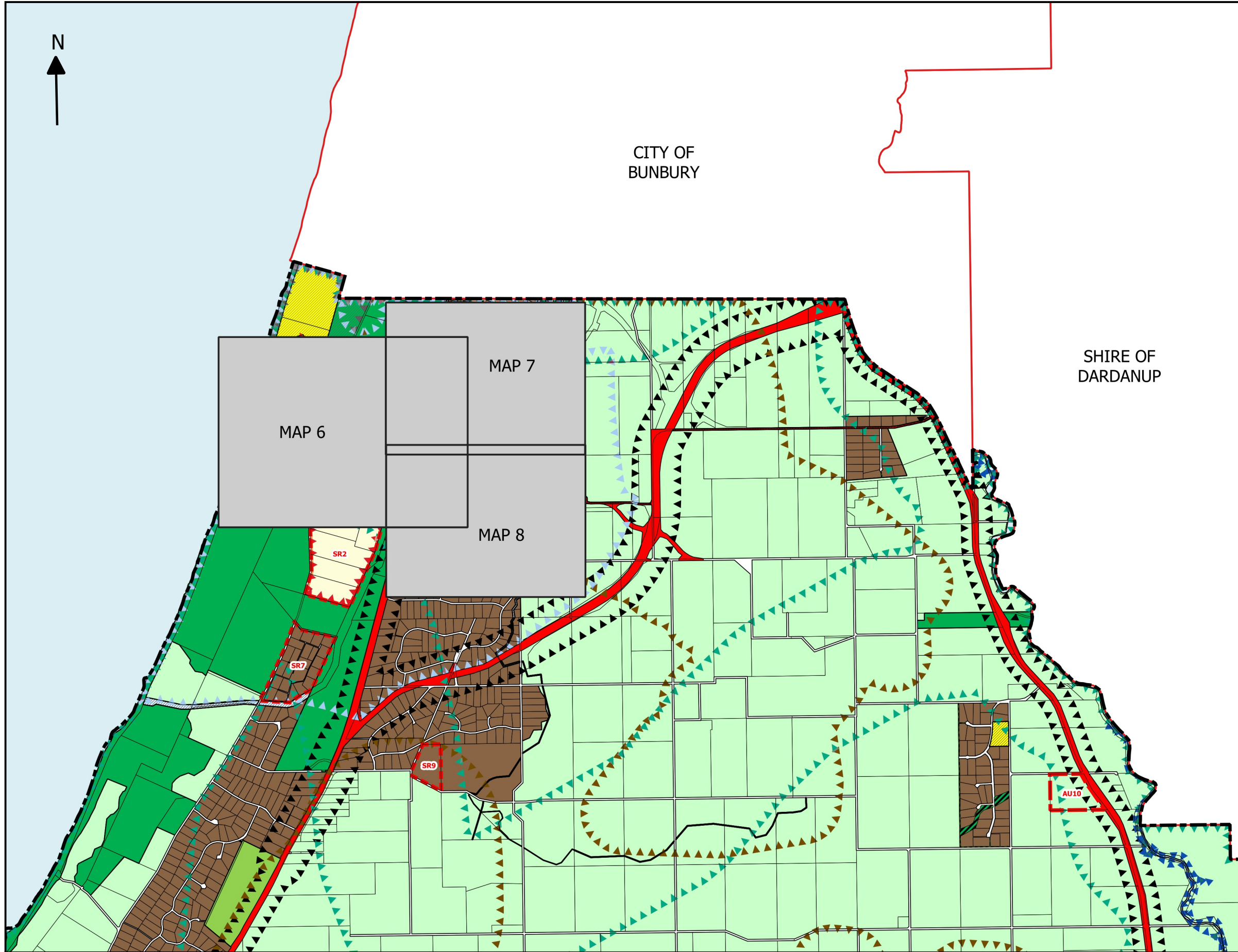




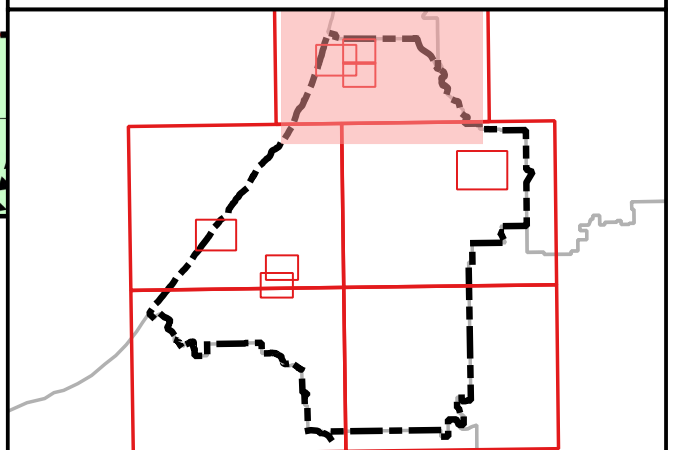
CITY OF  
BUNBURY

SHIRE OF  
DARDANUP



**Legend**

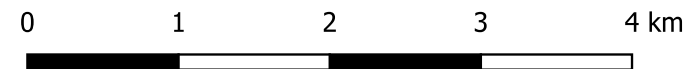
- Region Scheme Reserves (GBRS)**
  - Regional open space
  - Primary regional roads
  - Other regional roads
  - Railways
  - HS Public purposes - high school
  - PU Public purposes - public utilities
  - State forests
  - Waterways
- Local Scheme Reserves**
  - Public Open Space
  - Environmental Conservation
  - State Forest
  - Civic and Community
  - Public Purposes
  - IS Infrastructure Services
  - E Education
  - ES Emergency Services
  - H Heritage
  - R Recreational
  - CE Cemetery
  - Drainage / Waterway
  - Railways
  - Primary Distributor Road
  - District Distributor Road
  - Local Distributor Road
  - Local Road
- Local Scheme Zones**
  - Residential
  - Urban Development
  - Rural Residential
  - Light Industry
  - General Industry
  - District Centre
  - Commercial
  - Mixed Use Residential
  - Service Commercial
  - Private Community Purposes
  - Priority Agriculture
  - Rural
- Local Scheme Special Areas**
  - SCA1 - Development Area
  - SCA2 - Development Contribution Area
  - SCA3 - Flood Prone Land
  - SCA4 - Transport Corridors
  - SCA5 - Wastewater Treatment Plant Odour Buffer
  - SCA6 - Strategic Minerals and Basic Raw Materials
  - SCA7 - Public Drinking Water Reserves
  - SCA8 - Regional Ecological Linkages
- Local Scheme Other Categories**
  - Additional Site and Development Requirements
  - Additional Use
  - Restricted Use
  - Oceans/Waterways
  - R Codes



Map Produced By  
Shire of Capel  
22/06/2023

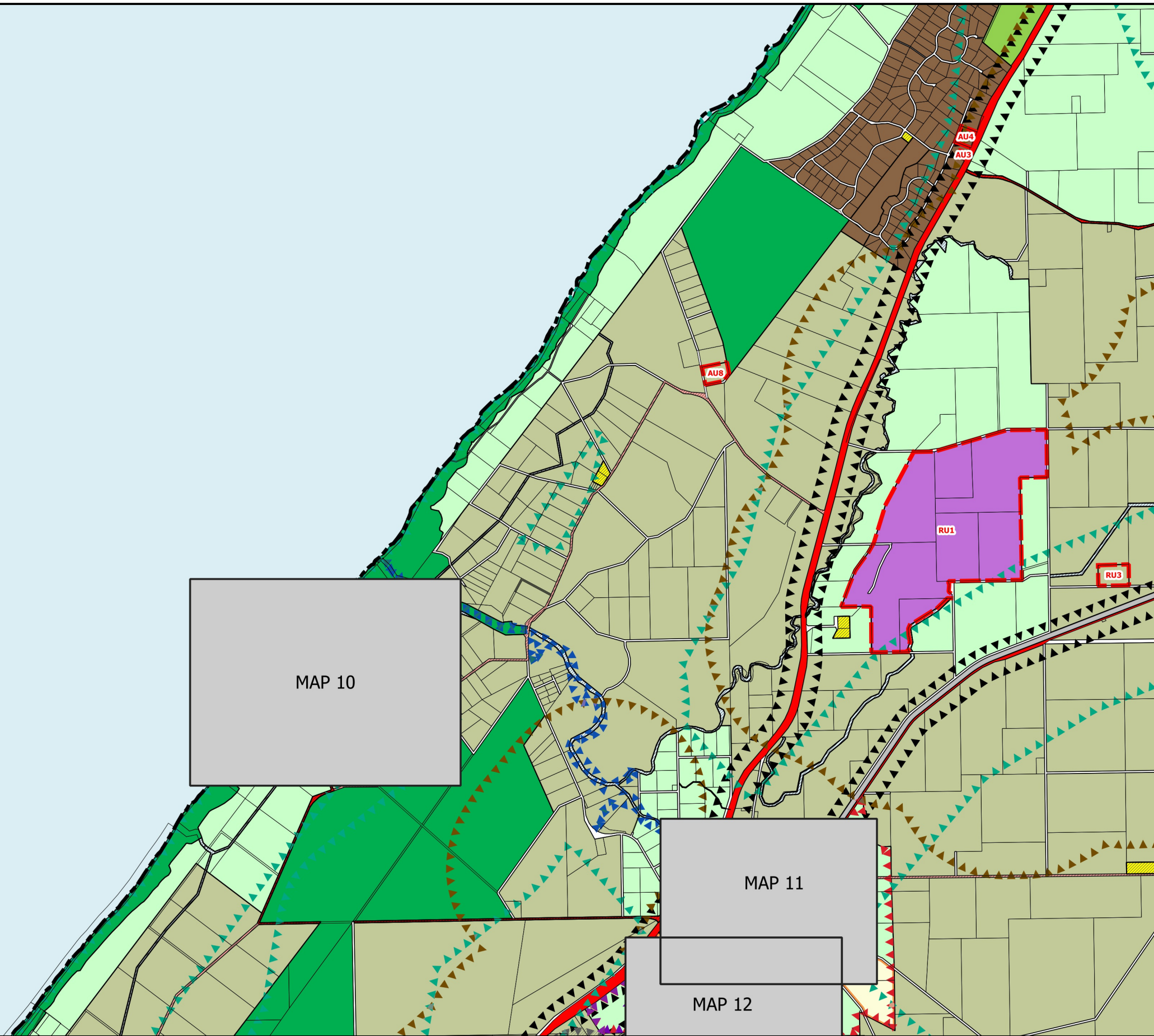
**SHIRE OF CAPEL**  
Local Planning Scheme No.8  
(District Scheme)

Map No. 1 of 12 - Gelorup Locality Surrounds



Scale 1:50,000





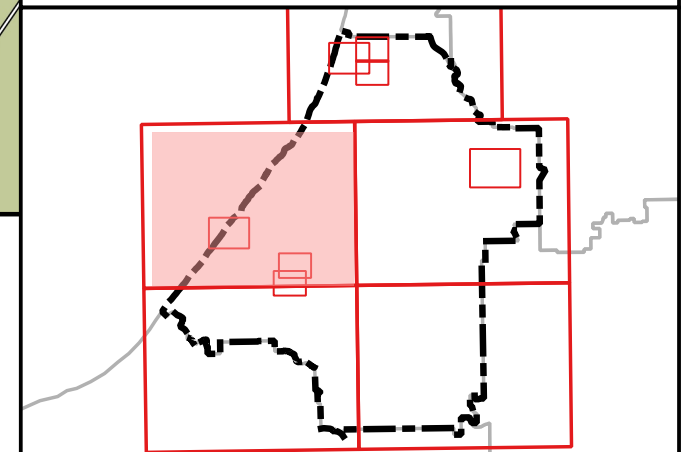
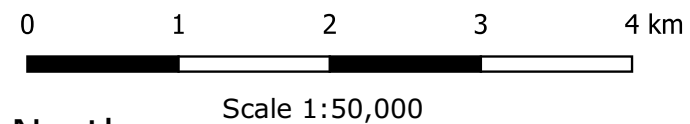
**Legend**

- Region Scheme Reserves (GBRS)**
  - Regional open space
  - Primary regional roads
  - Other regional roads
  - Railways
  - HS Public purposes - high school
  - PU Public purposes - public utilities
  - State forests
  - Waterways
- Local Scheme Reserves**
  - Public Open Space
  - Environmental Conservation
  - State Forest
  - Civic and Community
  - Public Purposes
  - IS Infrastructure Services
  - E Education
  - ES Emergency Services
  - H Heritage
  - R Recreational
  - CE Cemetery
  - Drainage / Waterway
  - Railways
  - Primary Distributor Road
  - District Distributor Road
  - Local Distributor Road
  - Local Road
- Local Scheme Zones**
  - Residential
  - Urban Development
  - Rural Residential
  - Light Industry
  - General Industry
  - District Centre
  - Commercial
  - Mixed Use Residential
  - Service Commercial
  - Private Community Purposes
  - Priority Agriculture
  - Rural
- Local Scheme Special Areas**
  - SCA1 - Development Area
  - SCA2 - Development Contribution Area
  - SCA3 - Flood Prone Land
  - SCA4 - Transport Corridors
  - SCA5 - Wastewater Treatment Plant Odour Buffer
  - SCA6 - Strategic Minerals and Basic Raw Materials
  - SCA7 - Public Drinking Water Reserves
  - SCA8 - Regional Ecological Linkages
- Local Scheme Other Categories**
  - Additional Site and Development Requirements
  - Additional Use
  - Restricted Use
  - Oceans/Waterways
  - R Codes

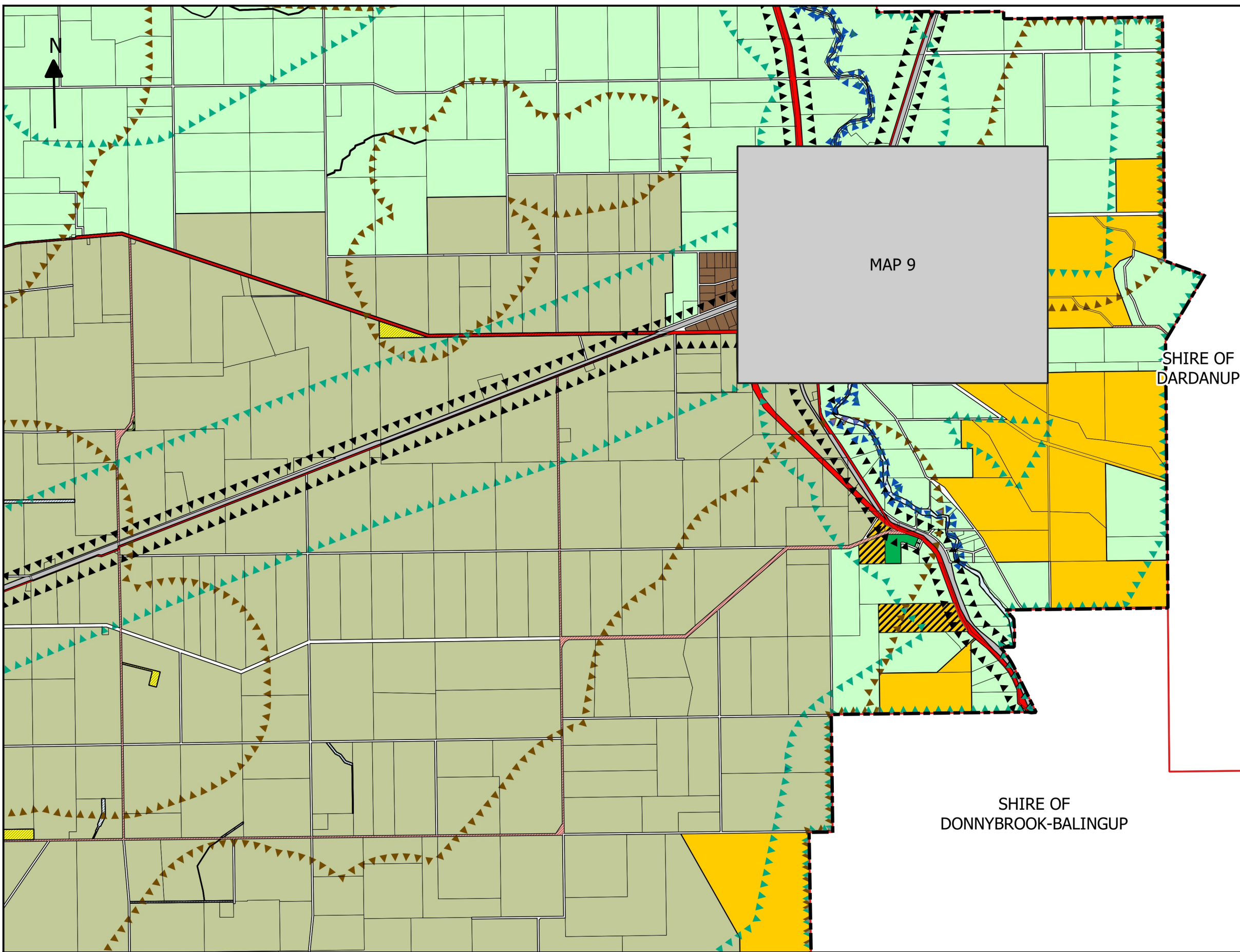


Map Produced By  
Shire of Capel  
22/06/2023

**SHIRE OF CAPEL**  
**Local Planning Scheme No.8**  
**(District Scheme)**  
**Map No. 2 of 12 - Capel Locality Surrounds North**





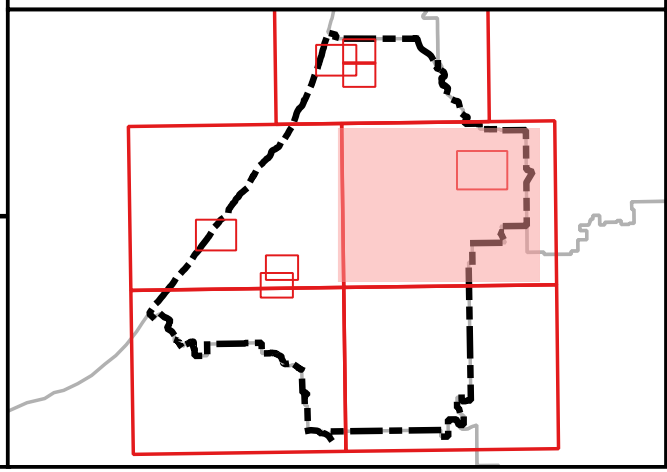
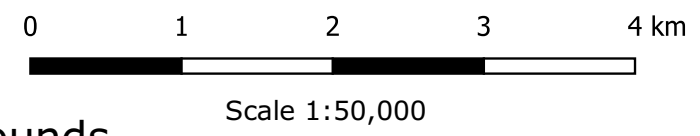


- Legend**
- Region Scheme Reserves (GBRS)**
- Regional open space
  - Primary regional roads
  - Other regional roads
  - Railways
  - HS Public purposes - high school
  - PU Public purposes - public utilities
  - State forests
  - Waterways
- Local Scheme Reserves**
- Public Open Space
  - Environmental Conservation
  - State Forest
  - Civic and Community
  - Public Purposes
  - IS Infrastructure Services
  - E Education
  - ES Emergency Services
  - H Heritage
  - R Recreational
  - CE Cemetery
  - Drainage / Waterway
  - Railways
  - Primary Distributor Road
  - District Distributor Road
  - Local Distributor Road
  - Local Road
- Local Scheme Zones**
- Residential
  - Urban Development
  - Rural Residential
  - Light Industry
  - General Industry
  - District Centre
  - Commercial
  - Mixed Use Residential
  - Service Commercial
  - Private Community Purposes
  - Priority Agriculture
  - Rural
- Local Scheme Special Areas**
- SCA1 - Development Area
  - SCA2 - Development Contribution Area
  - SCA3 - Flood Prone Land
  - SCA4 - Transport Corridors
  - SCA5 - Wastewater Treatment Plant Odour Buffer
  - SCA6 - Strategic Minerals and Basic Raw Materials
  - SCA7 - Public Drinking Water Reserves
  - SCA8 - Regional Ecological Linkages
- Local Scheme Other Categories**
- Additional Site and Development Requirements
  - Additional Use
  - Restricted Use
  - Oceans/Waterways
  - R Codes

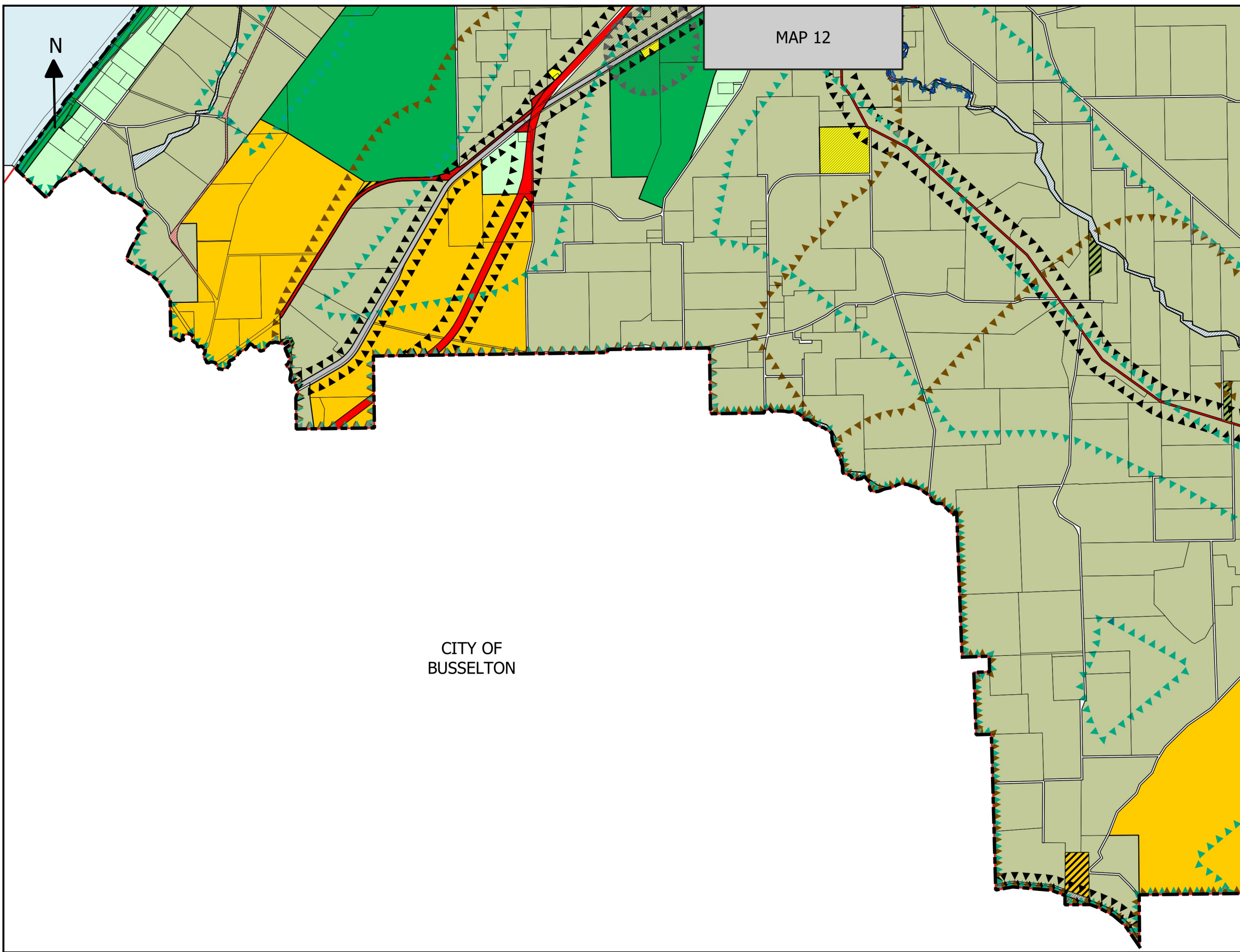


Map Produced By  
Shire of Capel  
22/06/2023

**SHIRE OF CAPEL**  
Local Planning Scheme No.8  
(District Scheme)  
Map No. 3 of 12 - Boyanup Townsite Surrounds



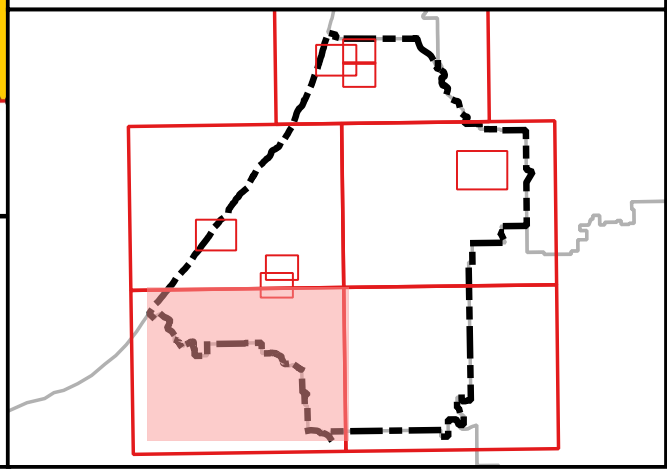




MAP 12

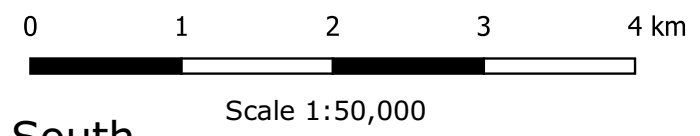
CITY OF  
BUSSELTON

- Legend**
- Region Scheme Reserves (GBRS)**
- Regional open space
  - Primary regional roads
  - Other regional roads
  - Railways
  - HS Public purposes - high school
  - PU Public purposes - public utilities
  - State forests
  - Waterways
- Local Scheme Reserves**
- Public Open Space
  - Environmental Conservation
  - State Forest
  - Civic and Community
  - Public Purposes
  - IS Infrastructure Services
  - E Education
  - ES Emergency Services
  - H Heritage
  - R Recreational
  - CE Cemetery
  - Drainage / Waterway
  - Railways
  - Primary Distributor Road
  - District Distributor Road
  - Local Distributor Road
  - Local Road
- Local Scheme Zones**
- Residential
  - Urban Development
  - Rural Residential
  - Light Industry
  - General Industry
  - District Centre
  - Commercial
  - Mixed Use Residential
  - Service Commercial
  - Private Community Purposes
  - Priority Agriculture
  - Rural
- Local Scheme Special Areas**
- SCA1 - Development Area
  - SCA2 - Development Contribution Area
  - SCA3 - Flood Prone Land
  - SCA4 - Transport Corridors
  - SCA5 - Wastewater Treatment Plant Odour Buffer
  - SCA6 - Strategic Minerals and Basic Raw Materials
  - SCA7 - Public Drinking Water Reserves
  - SCA8 - Regional Ecological Linkages
- Local Scheme Other Categories**
- Additional Site and Development Requirements
  - Additional Use
  - Restricted Use
  - Oceans/Waterways
  - R Codes

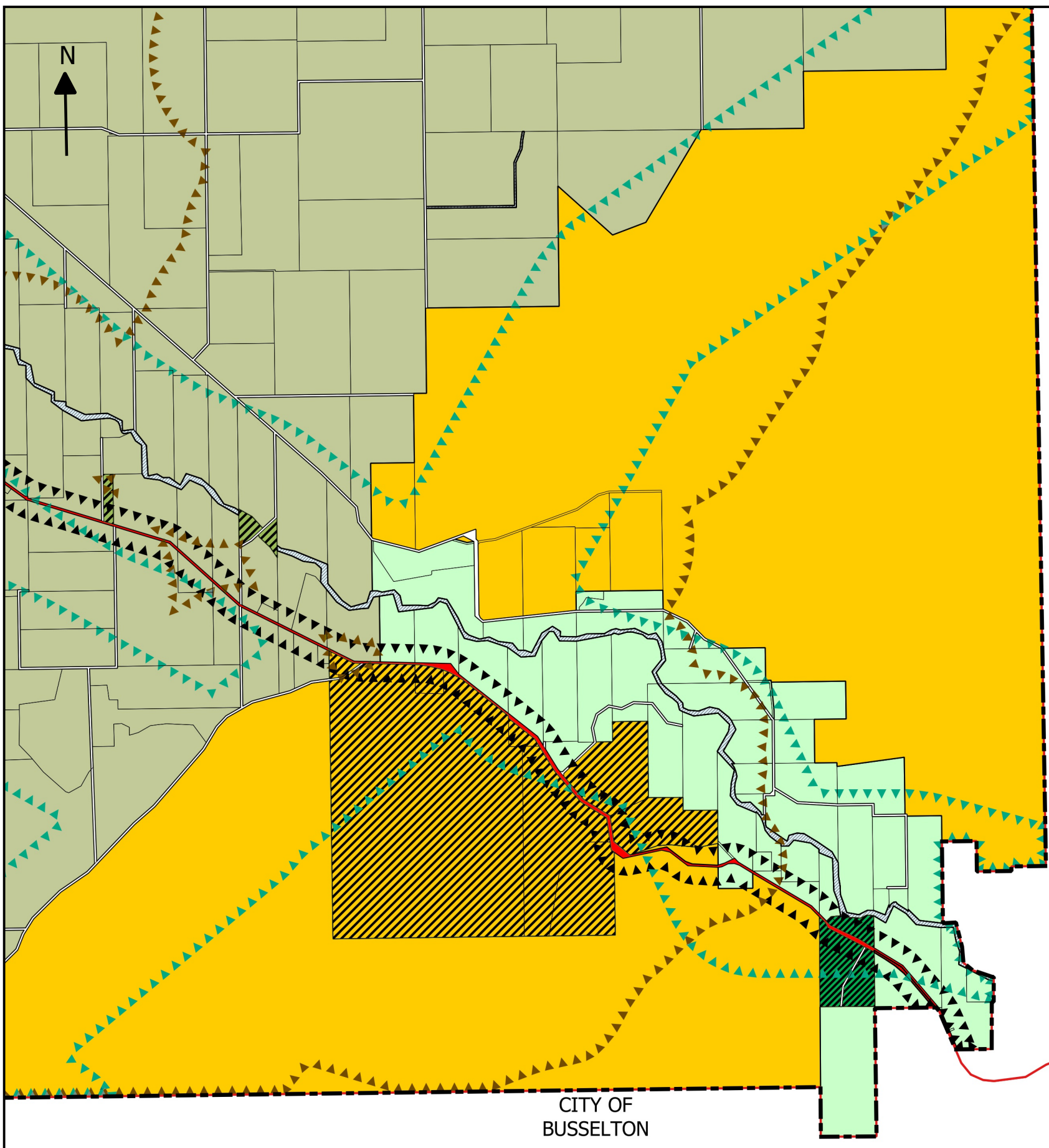


Map Produced By  
Shire of Capel  
22/06/2023

SHIRE OF CAPEL  
Local Planning Scheme No.8  
(District Scheme)  
Map No. 4 of 12 - Capel Locality Surrounds South





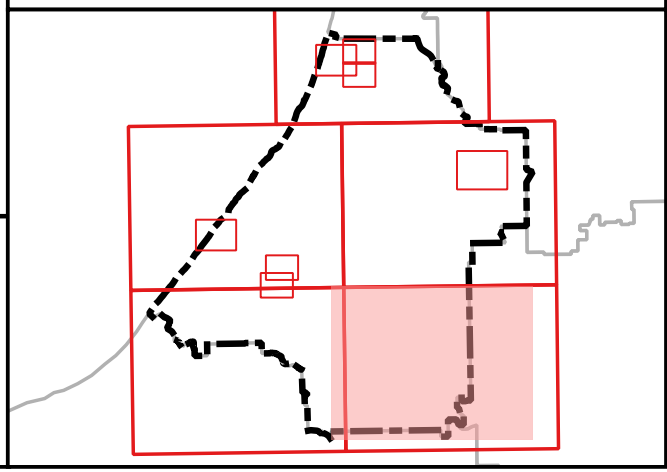
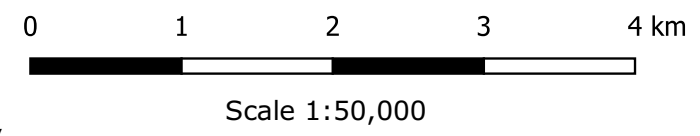


SHIRE OF  
DONNYBROOK-BALINGUP

CITY OF  
BUSSELTON

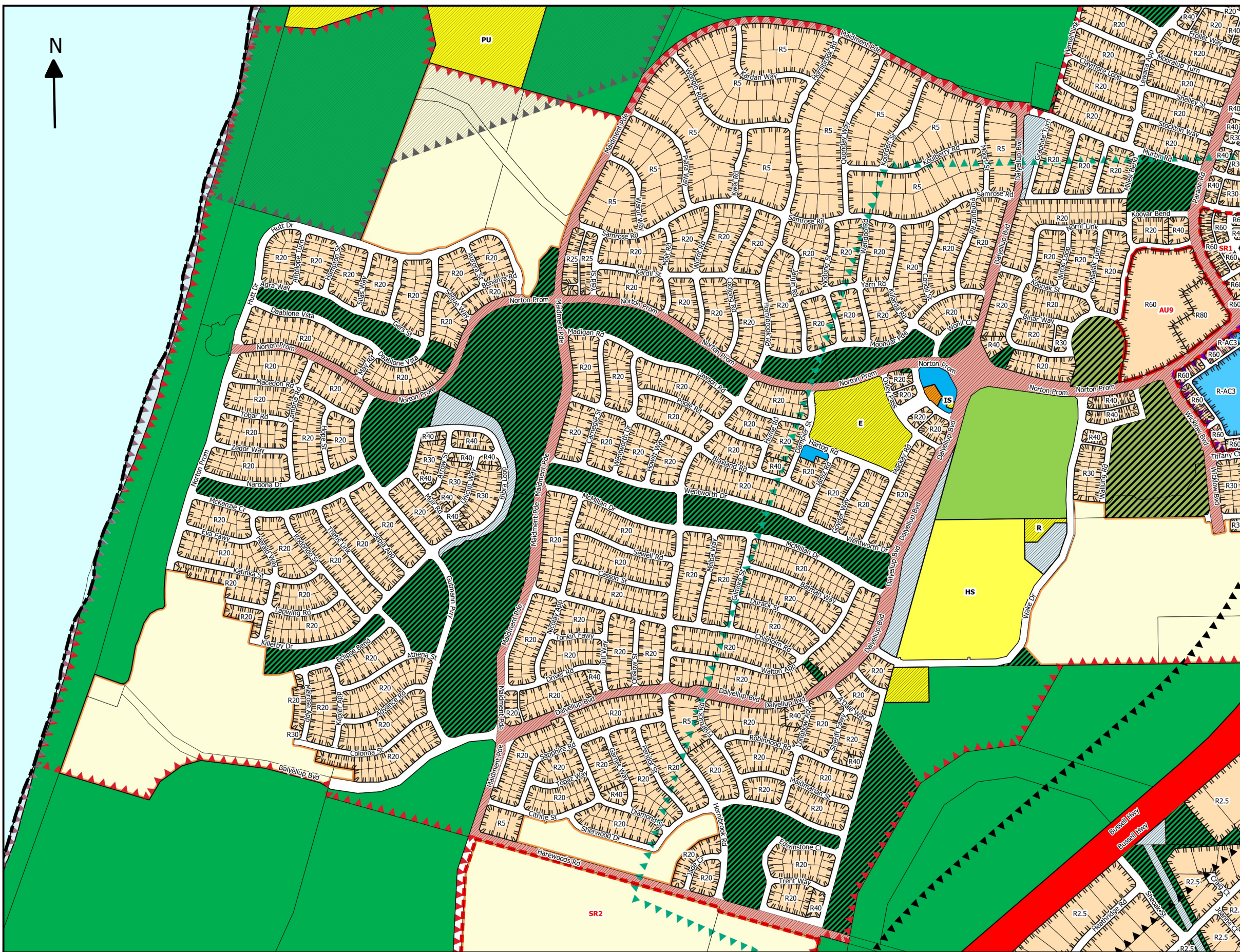
- Legend**
- Region Scheme Reserves (GBRS)**
- Regional open space
  - Primary regional roads
  - Other regional roads
  - Railways
  - HS Public purposes - high school
  - PU Public purposes - public utilities
  - State forests
  - Waterways
- Local Scheme Reserves**
- Public Open Space
  - Environmental Conservation
  - State Forest
  - Civic and Community
  - Public Purposes
  - IS Infrastructure Services
  - E Education
  - ES Emergency Services
  - H Heritage
  - R Recreational
  - CE Cemetery
  - Drainage / Waterway
  - Railways
  - Primary Distributor Road
  - District Distributor Road
  - Local Distributor Road
  - Local Road
- Local Scheme Zones**
- Residential
  - Urban Development
  - Rural Residential
  - Light Industry
  - General Industry
  - District Centre
  - Commercial
  - Mixed Use Residential
  - Service Commercial
  - Private Community Purposes
  - Priority Agriculture
  - Rural
- Local Scheme Special Areas**
- SCA1 - Development Area
  - SCA2 - Development Contribution Area
  - SCA3 - Flood Prone Land
  - SCA4 - Transport Corridors
  - SCA5 - Wastewater Treatment Plant Odour Buffer
  - SCA6 - Strategic Minerals and Basic Raw Materials
  - SCA7 - Public Drinking Water Reserves
  - SCA8 - Regional Ecological Linkages
- Local Scheme Other Categories**
- Additional Site and Development Requirements
  - Additional Use
  - Restricted Use
  - Oceans/Waterways
  - R Codes

SHIRE OF CAPEL  
Local Planning Scheme No.8  
(District Scheme)  
Map No. 5 of 12 - Capel River Locality

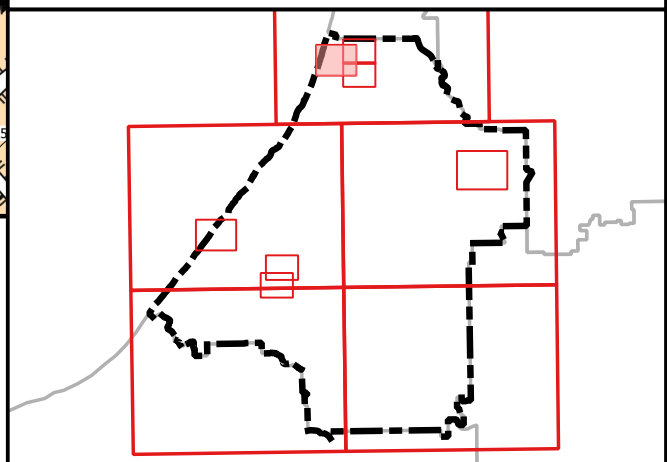


Map Produced By  
Shire of Capel  
22/06/2023



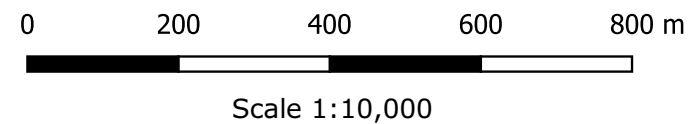


- Legend**
- Region Scheme Reserves (GBRS)**
- Regional open space
  - Primary regional roads
  - Other regional roads
  - Railways
  - HS Public purposes - high school
  - PU Public purposes - public utilities
  - State forests
  - Waterways
- Local Scheme Reserves**
- Public Open Space
  - Environmental Conservation
  - State Forest
  - Civic and Community
  - Public Purposes
  - IS Infrastructure Services
  - E Education
  - ES Emergency Services
  - H Heritage
  - R Recreational
  - Cemetery
  - Drainage / Waterway
  - Railways
  - Primary Distributor Road
  - District Distributor Road
  - Local Distributor Road
  - Local Road
- Local Scheme Zones**
- Residential
  - Urban Development
  - Rural Residential
  - Light Industry
  - General Industry
  - District Centre
  - Commercial
  - Mixed Use Residential
  - Service Commercial
  - Private Community Purposes
  - Priority Agriculture
  - Rural
- Local Scheme Special Areas**
- SCA1 - Development Area
  - SCA2 - Development Contribution Area
  - SCA3 - Flood Prone Land
  - SCA4 - Transport Corridors
  - SCA5 - Wastewater Treatment Plant Odour Buffer
  - SCA6 - Strategic Minerals and Basic Raw Materials
  - SCA7 - Public Drinking Water Reserves
  - SCA8 - Regional Ecological Linkages
- Local Scheme Other Categories**
- Additional Site and Development Requirements
  - Additional Use
  - Restricted Use
  - Oceans/Waterways
  - R Codes

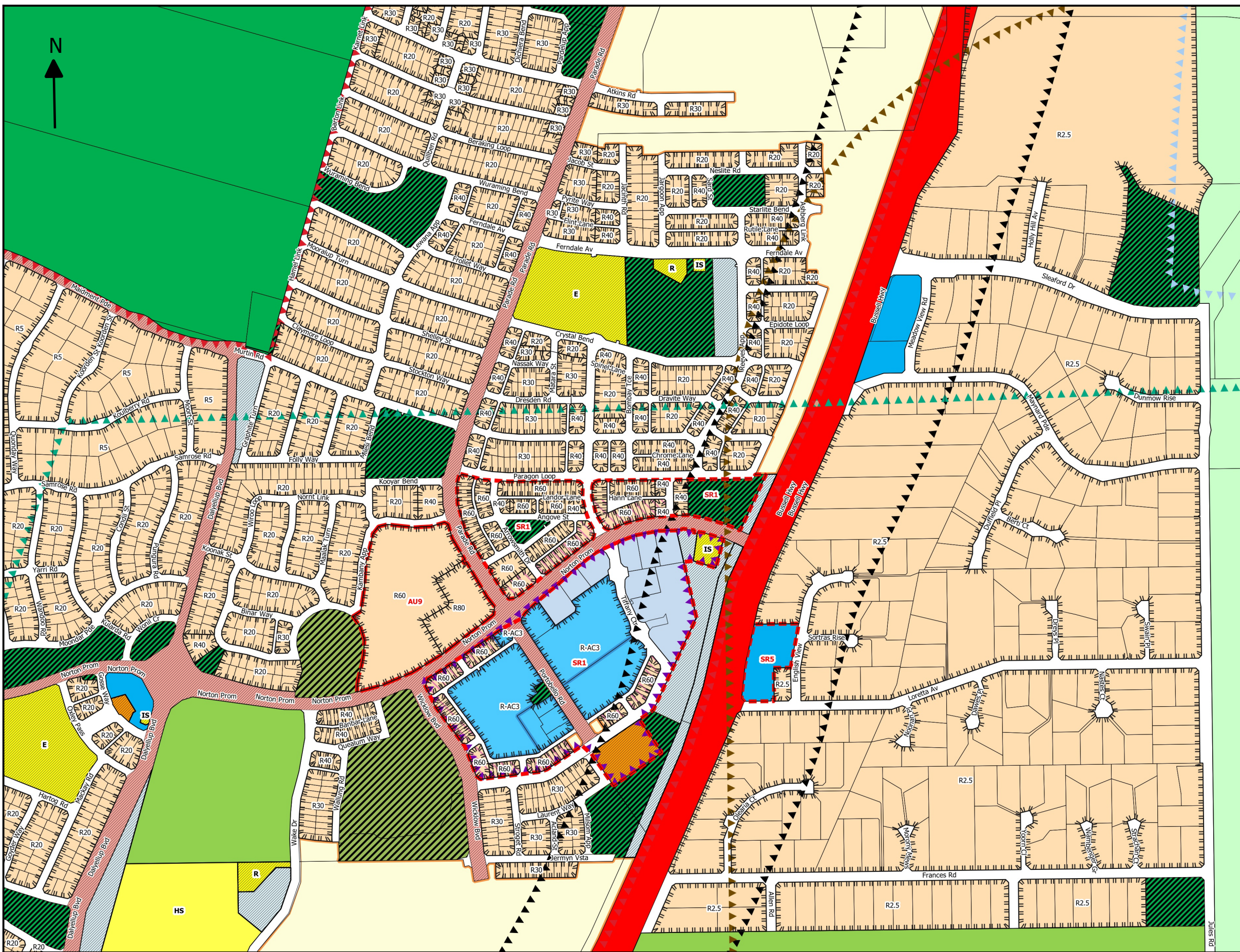


Map Produced By  
Shire of Capel  
22/06/2023

**SHIRE OF CAPEL**  
**Local Planning Scheme No.8**  
**(District Scheme)**  
**Map No. 6 of 12 - Dalyellup West**





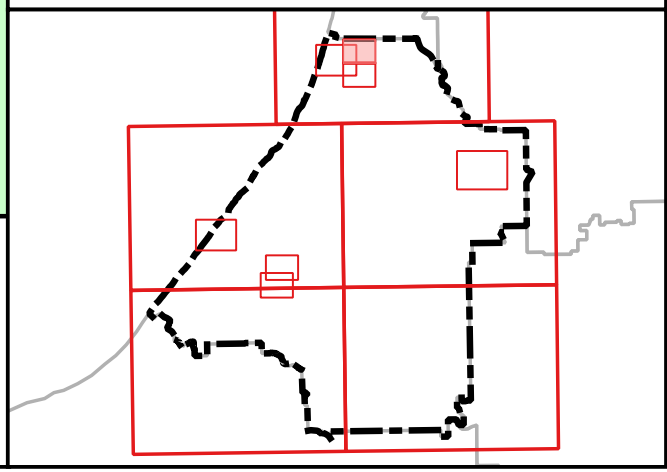
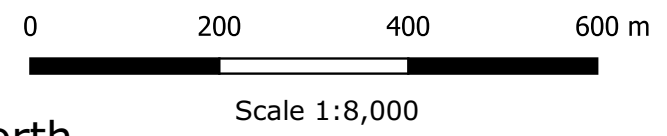


- Legend**
- Region Scheme Reserves (GBRS)**
- Regional open space
  - Primary regional roads
  - Other regional roads
  - Railways
  - HS Public purposes - high school
  - PU Public purposes - public utilities
  - State forests
  - Waterways
- Local Scheme Reserves**
- Public Open Space
  - Environmental Conservation
  - State Forest
  - Civic and Community
  - Public Purposes
  - IS Infrastructure Services
  - E Education
  - ES Emergency Services
  - H Heritage
  - R Recreational
  - CE Cemetery
  - Drainage / Waterway
  - Railways
  - Primary Distributor Road
  - District Distributor Road
  - Local Distributor Road
  - Local Road
- Local Scheme Zones**
- Residential
  - Urban Development
  - Rural Residential
  - Light Industry
  - General Industry
  - District Centre
  - Commercial
  - Mixed Use Residential
  - Service Commercial
  - Private Community Purposes
  - Priority Agriculture
  - Rural
- Local Scheme Special Areas**
- SCA1 - Development Area
  - SCA2 - Development Contribution Area
  - SCA3 - Flood Prone Land
  - SCA4 - Transport Corridors
  - SCA5 - Wastewater Treatment Plant Odour Buffer
  - SCA6 - Strategic Minerals and Basic Raw Materials
  - SCA7 - Public Drinking Water Reserves
  - SCA8 - Regional Ecological Linkages
- Local Scheme Other Categories**
- Additional Site and Development Requirements
  - Additional Use
  - Restricted Use
  - Oceans/Waterways
  - R Codes

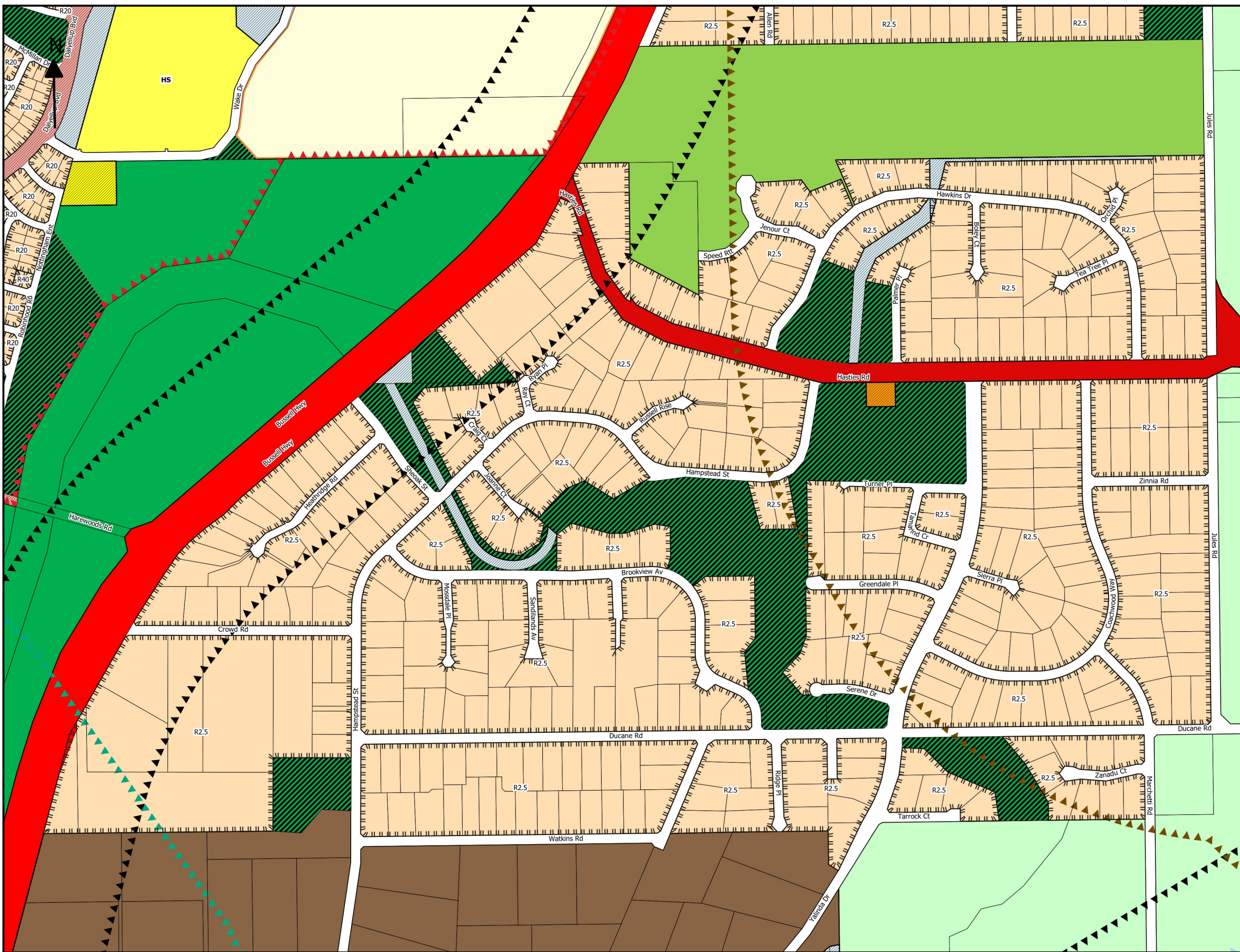


Map Produced By  
Shire of Capel  
22/06/2023

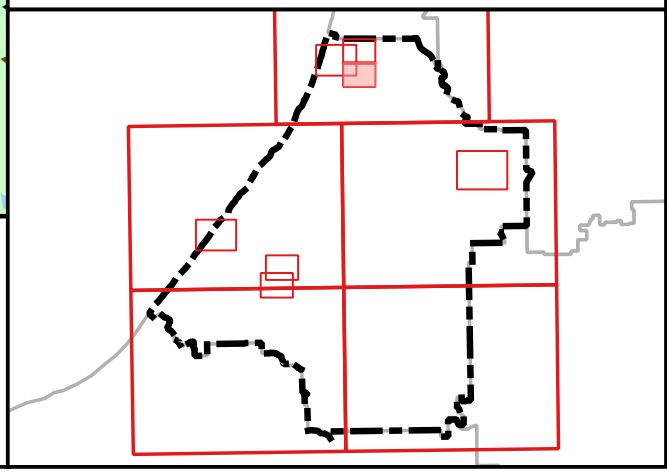
**SHIRE OF CAPEL**  
**Local Planning Scheme No.8**  
**(District Scheme)**  
**Map No. 7 of 12 - Dalyellup East & Gelorup North**





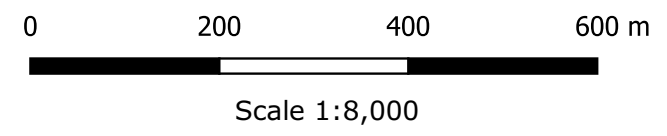


- ### Legend
- Region Scheme Reserves (GBRS)**
- Regional open space
  - Primary regional roads
  - Other regional roads
  - Railways
  - HS Public purposes - high school
  - PU Public purposes - public utilities
  - State forests
  - Waterways
- Local Scheme Reserves**
- Public Open Space
  - Environmental Conservation
  - State Forest
  - Civic and Community
  - Public Purposes
  - IS Infrastructure Services
  - E Education
  - ES Emergency Services
  - H Heritage
  - R Recreational
  - C Cemetery
  - Drainage / Waterway
  - Railways
  - Primary Distributor Road
  - District Distributor Road
  - Local Distributor Road
  - Local Road
- Local Scheme Zones**
- Residential
  - Urban Development
  - Rural Residential
  - Light Industry
  - General Industry
  - District Centre
  - Commercial
  - Mixed Use Residential
  - Service Commercial
  - Private Community Purposes
  - Priority Agriculture
  - Rural
- Local Scheme Special Areas**
- SCA1 - Development Area
  - SCA2 - Development Contribution Area
  - SCA3 - Flood Prone Land
  - SCA4 - Transport Corridors
  - SCA5 - Wastewater Treatment Plant Odour Buffer
  - SCA6 - Strategic Minerals and Basic Raw Materials
  - SCA7 - Public Drinking Water Reserves
  - SCA8 - Regional Ecological Linkages
- Local Scheme Other Categories**
- Additional Site and Development Requirements
  - Additional Use
  - Restricted Use
  - Oceans/Waterways
  - R Codes

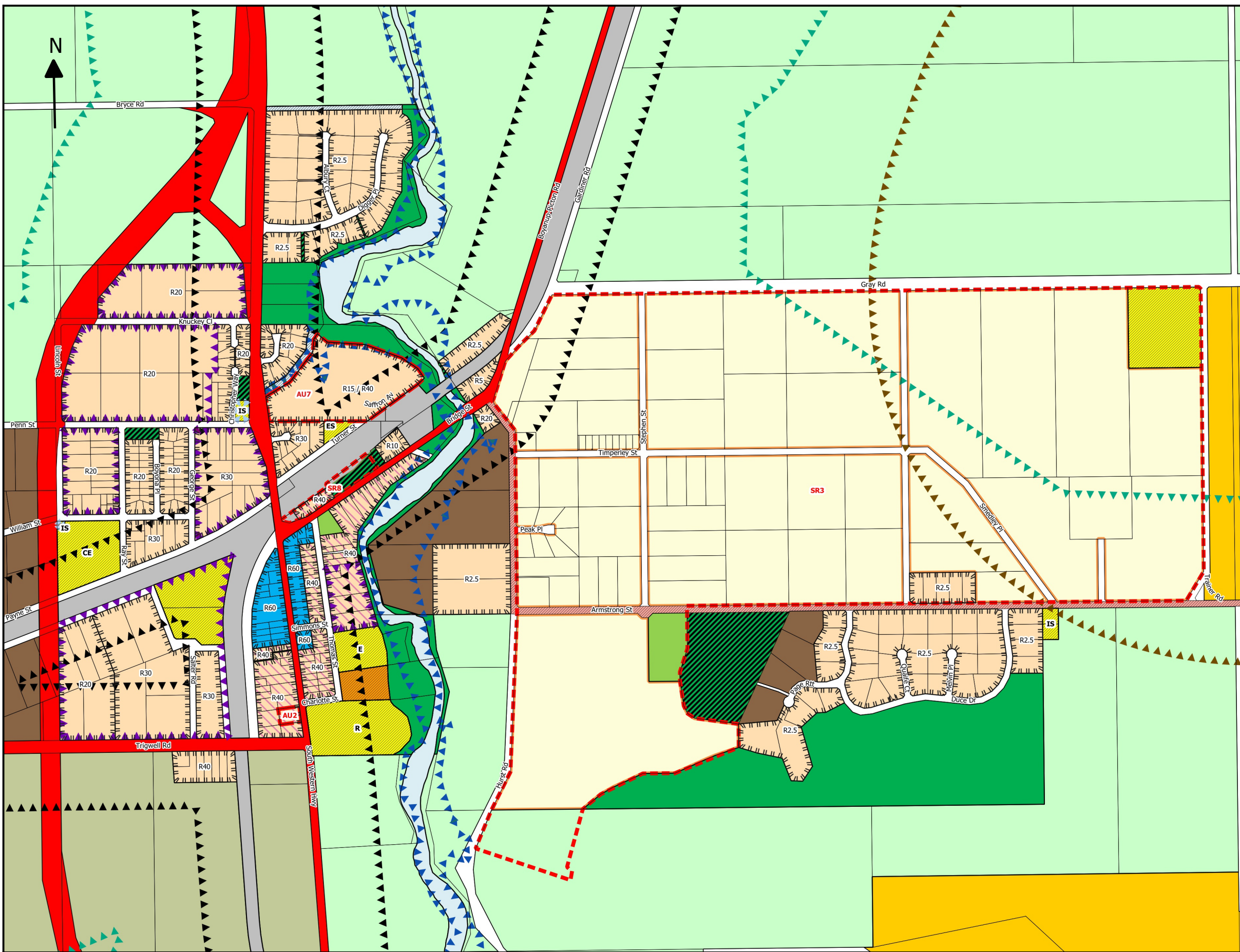


Map Produced By  
Shire of Capel  
22/06/2023

SHIRE OF CAPEL  
Local Planning Scheme No.8  
(District Scheme)  
Map No. 8 of 12 - Gelorup South





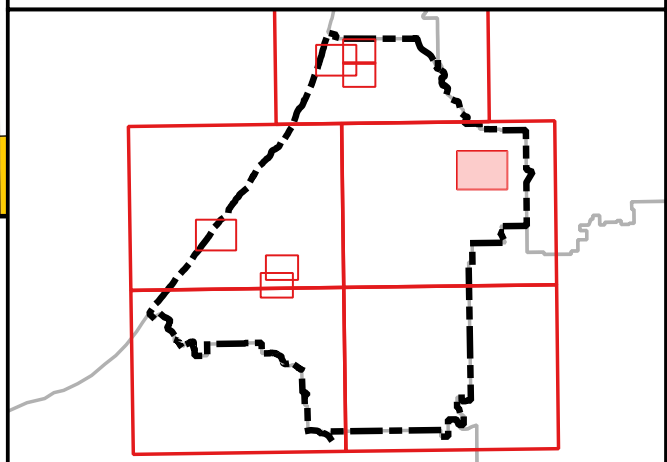
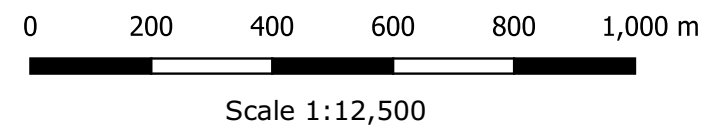


- Legend**
- Region Scheme Reserves (GBRS)**
- Regional open space
  - Primary regional roads
  - Other regional roads
  - Railways
  - HS Public purposes - high school
  - PU Public purposes - public utilities
  - State forests
  - Waterways
- Local Scheme Reserves**
- Public Open Space
  - Environmental Conservation
  - State Forest
  - Civic and Community
  - Public Purposes
  - IS Infrastructure Services
  - E Education
  - ES Emergency Services
  - H Heritage
  - R Recreational
  - Cemetery
  - Drainage / Waterway
  - Railways
  - Primary Distributor Road
  - District Distributor Road
  - Local Distributor Road
  - Local Road
- Local Scheme Zones**
- Residential
  - Urban Development
  - Rural Residential
  - Light Industry
  - General Industry
  - District Centre
  - Commercial
  - Mixed Use Residential
  - Service Commercial
  - Private Community Purposes
  - Priority Agriculture
  - Rural
- Local Scheme Special Areas**
- SCA1 - Development Area
  - SCA2 - Development Contribution Area
  - SCA3 - Flood Prone Land
  - SCA4 - Transport Corridors
  - SCA5 - Wastewater Treatment Plant Odour Buffer
  - SCA6 - Strategic Minerals and Basic Raw Materials
  - SCA7 - Public Drinking Water Reserves
  - SCA8 - Regional Ecological Linkages
- Local Scheme Other Categories**
- Additional Site and Development Requirements
  - Additional Use
  - Restricted Use
  - Oceans/Waterways
  - R Codes

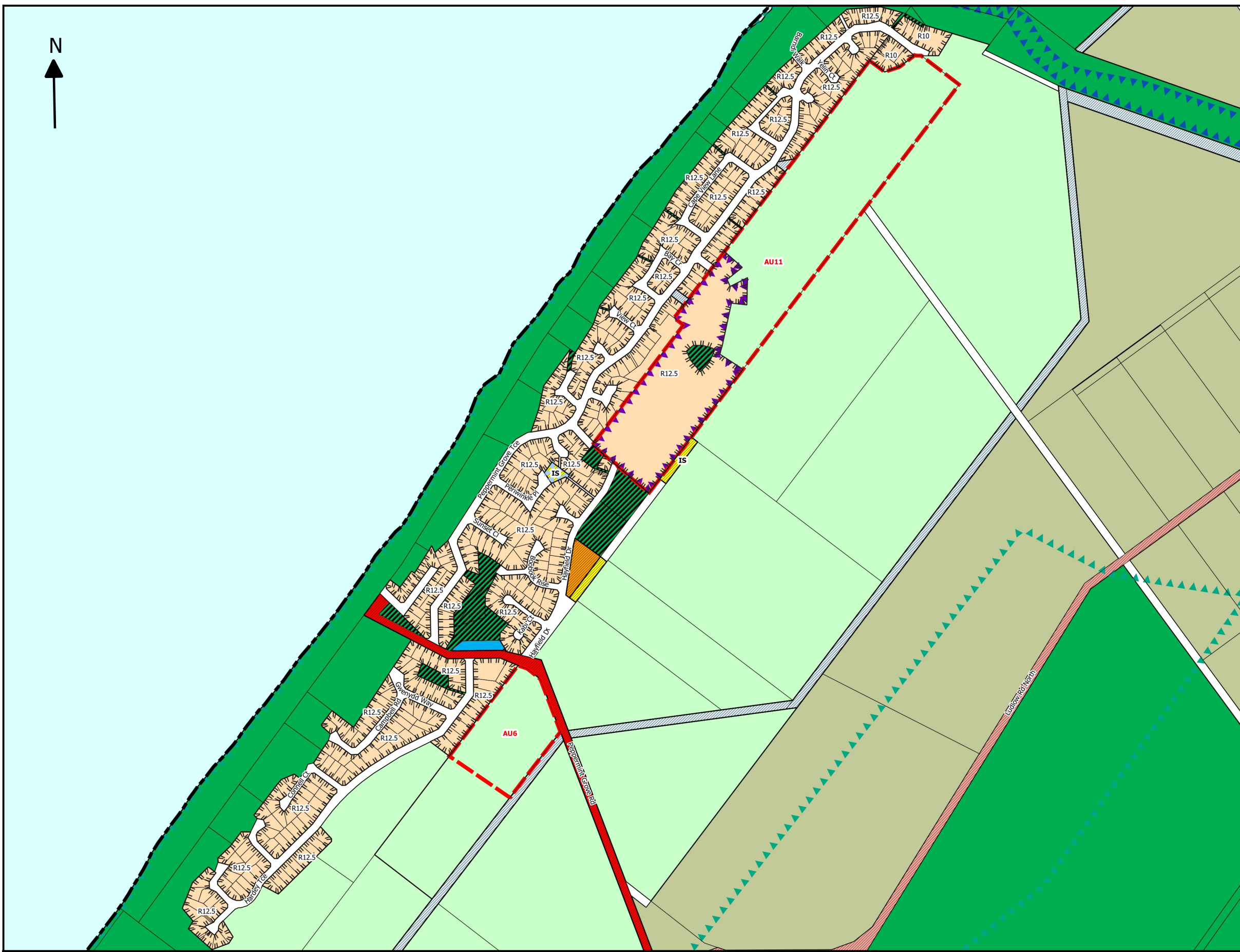


Map Produced By  
Shire of Capel  
22/06/2023

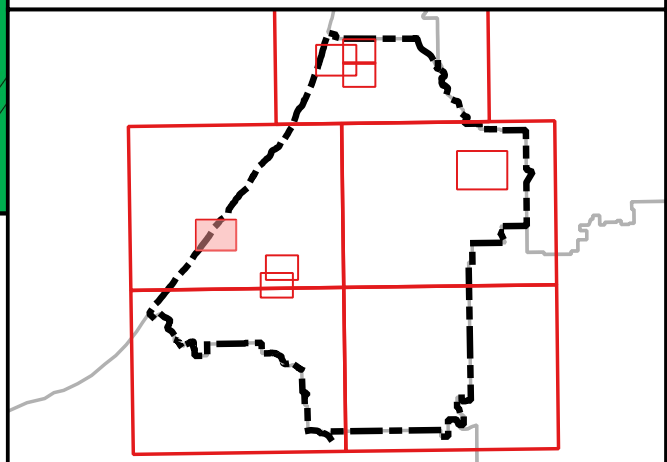
SHIRE OF CAPEL  
Local Planning Scheme No.8  
(District Scheme)  
Map No. 9 of 12 - Boyanup Townsite





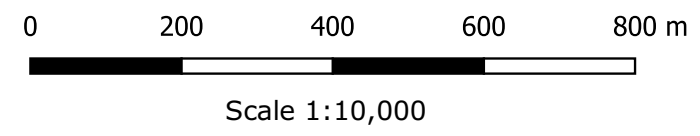


- Legend**
- Region Scheme Reserves (GBRS)**
- Regional open space
  - Primary regional roads
  - Other regional roads
  - Railways
  - Public purposes - high school
  - Public purposes - public utilities
  - State forests
  - Waterways
- Local Scheme Reserves**
- Public Open Space
  - Environmental Conservation
  - State Forest
  - Civic and Community
  - Public Purposes
  - Infrastructure Services
  - Education
  - Emergency Services
  - Heritage
  - Recreational
  - Cemetery
  - Drainage / Waterway
  - Railways
  - Primary Distributor Road
  - District Distributor Road
  - Local Distributor Road
  - Local Road
- Local Scheme Zones**
- Residential
  - Urban Development
  - Rural Residential
  - Light Industry
  - General Industry
  - District Centre
  - Commercial
  - Mixed Use Residential
  - Service Commercial
  - Private Community Purposes
  - Priority Agriculture
  - Rural
- Local Scheme Special Areas**
- SCA1 - Development Area
  - SCA2 - Development Contribution Area
  - SCA3 - Flood Prone Land
  - SCA4 - Transport Corridors
  - SCA5 - Wastewater Treatment Plant Odour Buffer
  - SCA6 - Strategic Minerals and Basic Raw Materials
  - SCA7 - Public Drinking Water Reserves
  - SCA8 - Regional Ecological Linkages
- Local Scheme Other Categories**
- Additional Site and Development Requirements
  - Additional Use
  - Restricted Use
  - Oceans/Waterways
  - R Codes

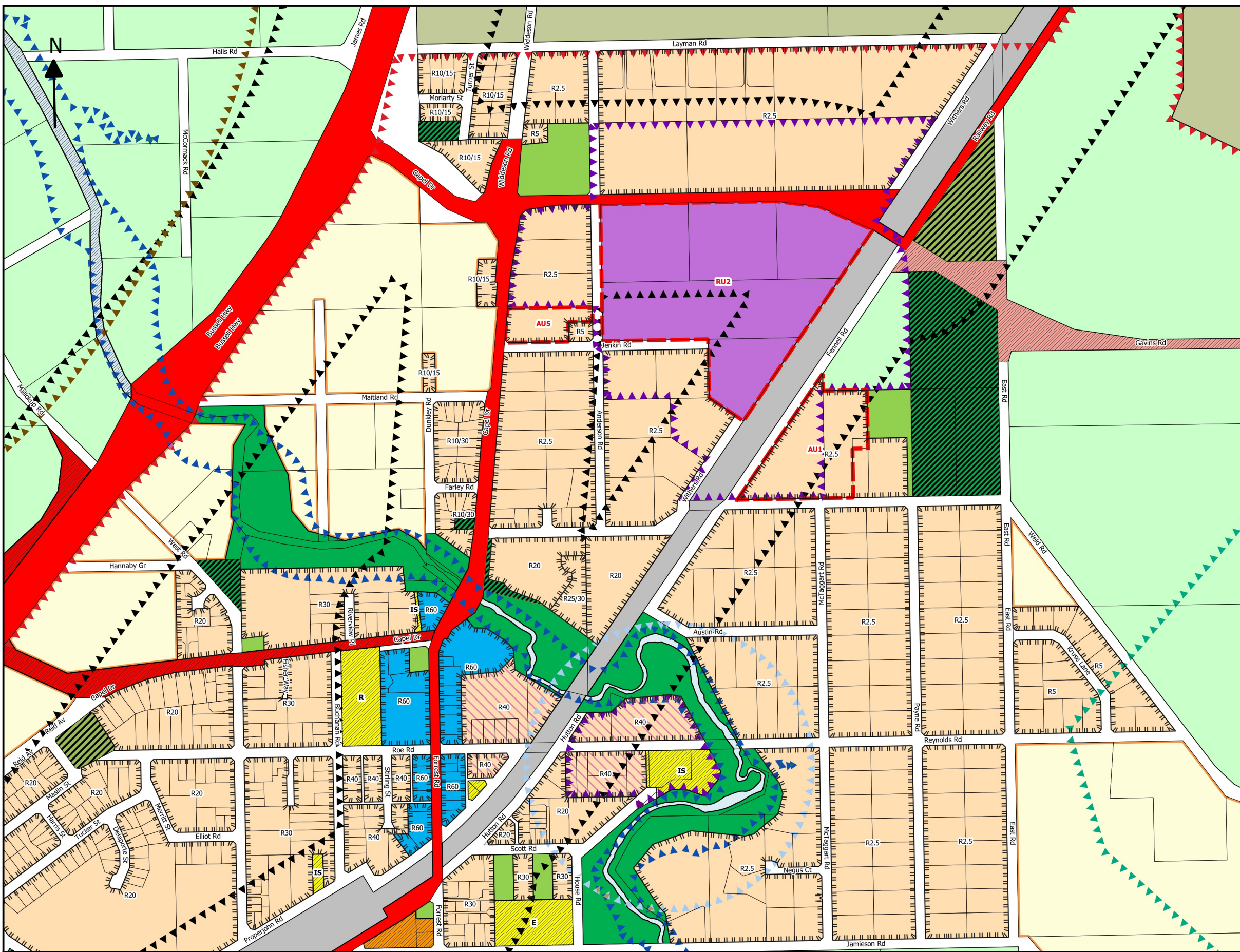


Map Produced By  
Shire of Capel  
22/06/2023

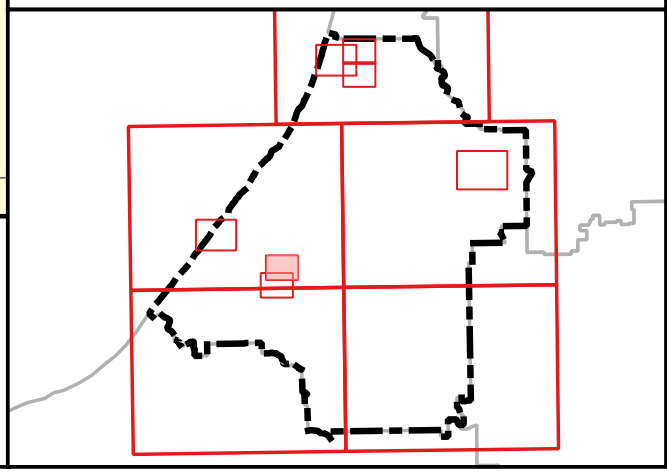
**SHIRE OF CAPEL**  
Local Planning Scheme No.8  
(District Scheme)  
Map No. 10 of 12 - Peppermint Grove Beach





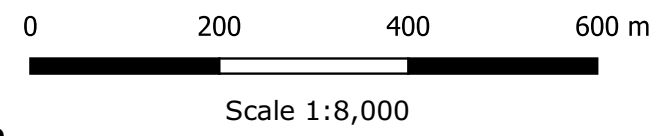


- Legend**
- Region Scheme Reserves (GBRS)**
- Regional open space
  - Primary regional roads
  - Other regional roads
  - Railways
  - HS Public purposes - high school
  - PU Public purposes - public utilities
  - State forests
  - Waterways
- Local Scheme Reserves**
- Public Open Space
  - Environmental Conservation
  - State Forest
  - Civic and Community
  - Public Purposes
  - IS Infrastructure Services
  - E Education
  - ES Emergency Services
  - H Heritage
  - R Recreational
  - CE Cemetery
  - Drainage / Waterway
  - Railways
  - Primary Distributor Road
  - District Distributor Road
  - Local Distributor Road
  - Local Road
- Local Scheme Zones**
- Residential
  - Urban Development
  - Rural Residential
  - Light Industry
  - General Industry
  - District Centre
  - Commercial
  - Mixed Use Residential
  - Service Commercial
  - Private Community Purposes
  - Priority Agriculture
  - Rural
- Local Scheme Special Areas**
- SCA1 - Development Area
  - SCA2 - Development Contribution Area
  - SCA3 - Flood Prone Land
  - SCA4 - Transport Corridors
  - SCA5 - Wastewater Treatment Plant Odour Buffer
  - SCA6 - Strategic Minerals and Basic Raw Materials
  - SCA7 - Public Drinking Water Reserves
  - SCA8 - Regional Ecological Linkages
- Local Scheme Other Categories**
- Additional Site and Development Requirements
  - Additional Use
  - Restricted Use
  - Oceans/Waterways
  - R Codes

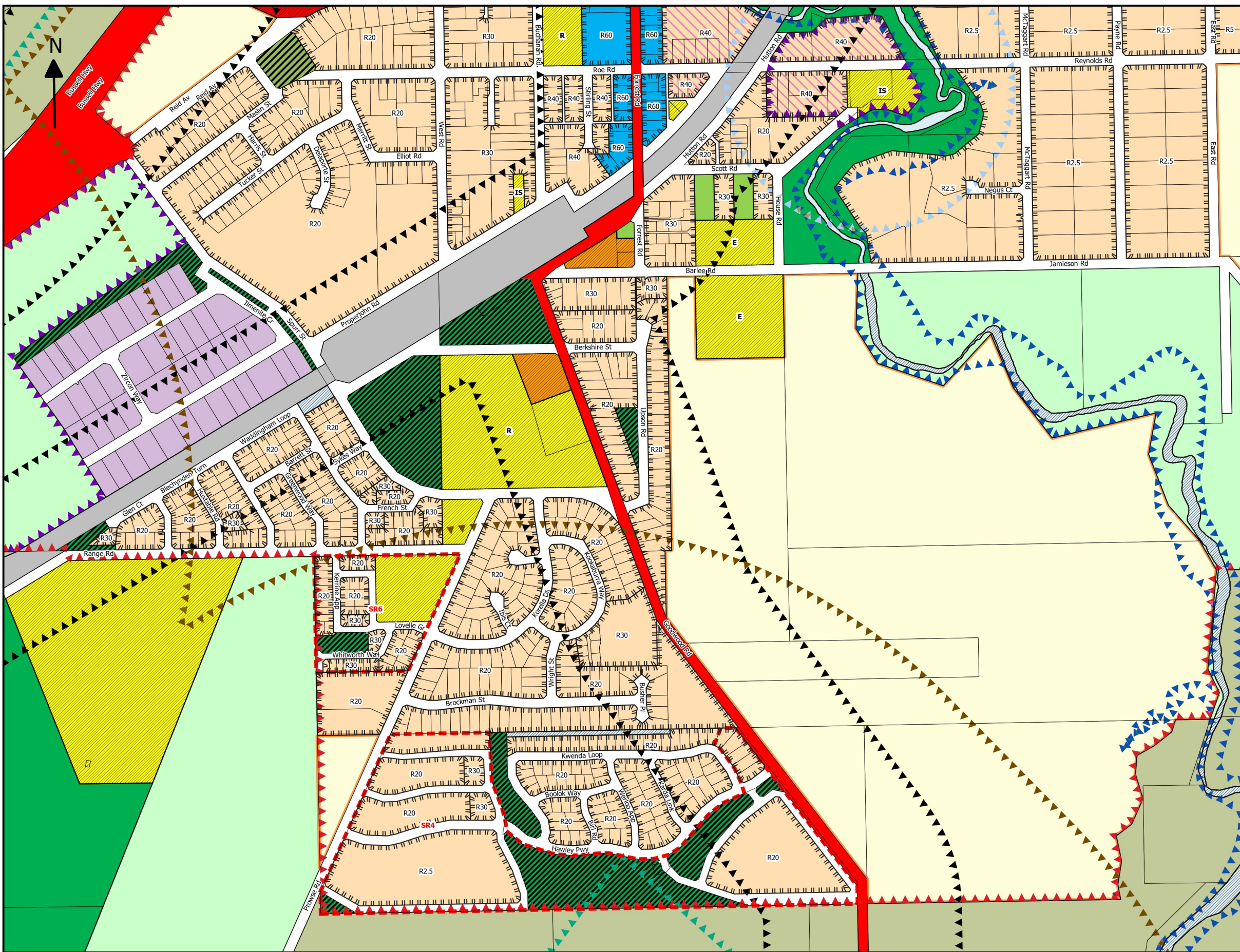


Map Produced By  
Shire of Capel  
22/06/2023

**SHIRE OF CAPEL**  
**Local Planning Scheme No.8**  
**(District Scheme)**  
**Map No. 11 of 12 - Capel Townsite North**







- ### Legend
- #### Region Scheme Reserves (GBRS)
- Regional open space
  - Primary regional roads
  - Other regional roads
  - Railways
  - HS Public purposes - high school
  - PU Public purposes - public utilities
  - State forests
  - Waterways
- #### Local Scheme Reserves
- Public Open Space
  - Environmental Conservation
  - State Forest
  - Civic and Community
  - Public Purposes
  - IS Infrastructure Services
  - E Education
  - ES Emergency Services
  - H Heritage
  - R Recreational
  - CE Cemetery
  - Drainage / Waterway
  - Railways
  - Primary Distributor Road
  - District Distributor Road
  - Local Distributor Road
  - Local Road
- #### Local Scheme Zones
- Residential
  - Urban Development
  - Rural Residential
  - Light Industry
  - General Industry
  - District Centre
  - Commercial
  - Mixed Use Residential
  - Service Commercial
  - Private Community Purposes
  - Priority Agriculture
  - Rural
- #### Local Scheme Special Areas
- SCA1 - Development Area
  - SCA2 - Development Contribution Area
  - SCA3 - Flood Prone Land
  - SCA4 - Transport Corridors
  - SCA5 - Wastewater Treatment Plant Odour Buffer
  - SCA6 - Strategic Minerals and Basic Raw Materials
  - SCA7 - Public Drinking Water Reserves
  - SCA8 - Regional Ecological Linkages
- #### Local Scheme Other Categories
- Additional Site and Development Requirements
  - Additional Use
  - Restricted Use
  - Oceans/Waterways
  - R Codes



Map Produced By  
Shire of Capel  
22/06/2023

SHIRE OF CAPEL  
Local Planning Scheme No.8  
(District Scheme)  
Map No. 12 of 12 - Capel Townsite South

